

CASE STUDY

Active /Active Continuity

Paying for a secondary 6Mbps circuit to just sit there in case of a fiber cut was hard to justify in this manufacturer's IT budget



MSx Managed SD-WAN



Say goodbye to continuity packages limited to which service the customer needs failed over and what transport options are available at a specific site. We can mix and match.

*Jared Martin
Vice President
MSx Managed Services
TPx*

Managed SD-WAN isn't just a new way to allow locations to access the TPx network where it is cost prohibitive; using customer-provided circuits to our services nationwide is just one aspect. SD-WAN also enables a single continuity solution to do everything our current Local Access Continuity, ①Net Continuity and Internet Continuity services can do. And more. Gone are primary and secondary circuits, sitting in passive mode waiting for the primary circuit to crash. SD-WAN allows you to mix and match any transport provided by TPx or a local internet provider to securely and seamlessly failover all of our core services — MPLS, DIA, SmartVoice, and UCx. Moreover, since both WAN connections are in active-active mode, the Managed Services Router (MSR) picks the best path for the traffic at that moment.

PROFILE

- Premier manufacturer
- Local Access Continuity package with 20Mbps fiber main circuit and 6Mbps fixed wireless failover

CHALLENGE

The customer had “dead money” sitting in a failover circuit that wasn't being utilized

SOLUTION

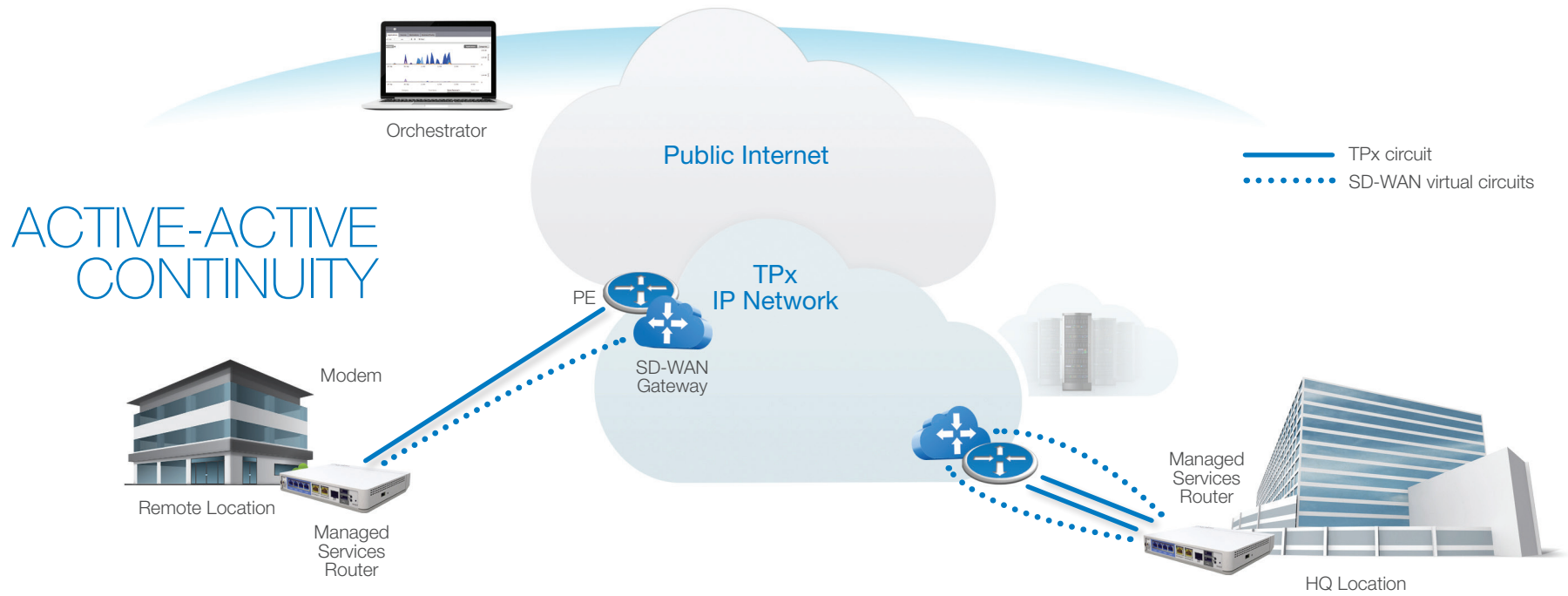
Reconfigured both circuits to TPx DIA and swapped out Cisco 2911 with MSR

BENEFITS

- Seamless failover to either circuit during an outage with faster re-directing of network traffic
- Outage during a call only results in temporary packet loss, not a dropped call
- Forward error correction enhances performance in dual WAN configuration

RESULTS

Can leverage full 26Mbps of bandwidth since both circuits are active, minimizing need for addition throughput



ACTIVE-ACTIVE CONTINUITY

Instead of having a primary circuit with a secondary circuit in passive mode waiting for a failure of the primary circuit, Active-Active Continuity allows you to run dual circuits of any transport (TPx or a local internet provider), utilizing the entire bandwidth of both at all times. The MSR optimizes the throughput. If either circuit crashes, the other circuit will automatically pick up the traffic instantly for all TPx core services. The orchestrator lets you monitor circuit performance and traffic loads at all times.