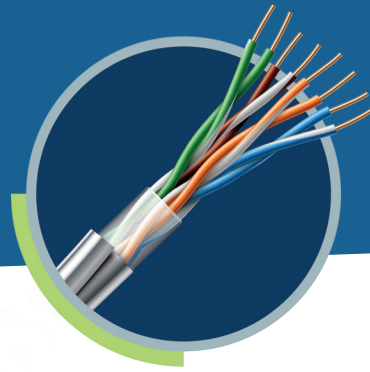


Digital POTS

Digitally Upgrade Critical Analog Lines with a Modern POTS Replacement Service



What Is It and Why Do You Need It?

Digital POTS is an advanced, reliable solution designed to replace traditional copper POTS (Plain Old Telephone Service) lines, which are becoming increasingly expensive to maintain and less available due to regulatory changes and technological advancements.

As telecom providers phase out copper POTS lines due to FCC Order 19-72A1, the cost and reliability of maintaining these lines for essential services such as fire alarms, elevator phones, and safety systems have become a significant concern for business.

TPx Digital POTS solution is available nationwide to assist with your shift away from POTS copper phone lines. The solution is pre-tested with over 50,000 lines deployed and pre-certified for alarm lines by the National Fire Protection Association and the New York City Fire Department.

Benefits

- **Certified Solution:** Fire code compliant solution, UL 60950-1 & UL 2054 certified
- **Reliable Connection:** Connect via broadband and/or 4G LTE SIM. Dual SIMs for added failover protection
- **Ongoing Support:** Professional installation, over-the-air firmware updates, and emergency support
- **Strategic Coverage:** Access to major cellular providers
- **Potential Cost Savings:** As POTS lines are retired, their costs rise. Save money and stabilize fees with TPx low-cost POTS line replacement
- **Tailored:** Flexible digital transformation tailored to your need
- **Quality Connection:** Low latency, high-speed networks ensure top-notch voice quality and reliability
- **Scalability:** Adjust features as needed to meet evolving communication requirements

How It Works

Digital POTS is a cutting-edge POTS replacement solution utilizing an adapter that can support one to eight POTS replacement lines from a single device connecting over the customer's internet. Featuring error correction and packet loss detection, it ensures uninterrupted service by resending lost packets to prevent call failures. The solution includes an 8-hour battery backup and two cellular SIM cards for additional reliability. The service will include provisioning, porting, and installation, ensuring seamless integration.

Digitally Upgrade Your Critical Lines



Elevator



Fire Alarm



Security Alarm



POS Terminal



Vending Machine



ATM Machine



Fax



POTS

Why TPx?

Comprehensive Managed Services: TPx offers a wide range of managed services including network, security, and IT solutions, ensuring that all your technological needs are covered under one roof.

Enhanced Security: With advanced cybersecurity solutions, TPx protects your business from evolving threats, ensuring your data and operations remain secure.

Scalable Solutions: TPx provides scalable services that grow with your business, allowing you to easily adjust your services as your needs change.

Expert Support: TPx boasts a team of experienced professionals available 24/7 to support your business, providing peace of mind and ensuring any issues are promptly resolved.

Cost Efficiency: By outsourcing your IT and communication needs to TPx, you can reduce overhead costs and focus more resources on core business activities.

Reliable Connectivity: With robust and reliable network solutions, TPx ensures your business remains connected, facilitating seamless communication and collaboration.

Specifications of CDS 9090 Adapter

- Connect with broadband and/or 4G LTE
- Cellular can be the primary connectivity if broadband is not available, or act as a backup in the event of primary circuit failure
- Dual SIMs provides added fail-over protection
- Handles up to 8 lines including voice, fax, elevator and alarm lines
- Up to 12-hour battery backup
- POTS Transformation is a fire code compliant solution, UL 60950-1 & UL 2054 certified



Recognized as an approved MFVN (Managed Facilities-based Voice Network) by the NYC Fire Department



Approved by California State Fire Marshal's Building Materials Listing Program (BML) as analog telecom replacement equipment for use with analog line devices

